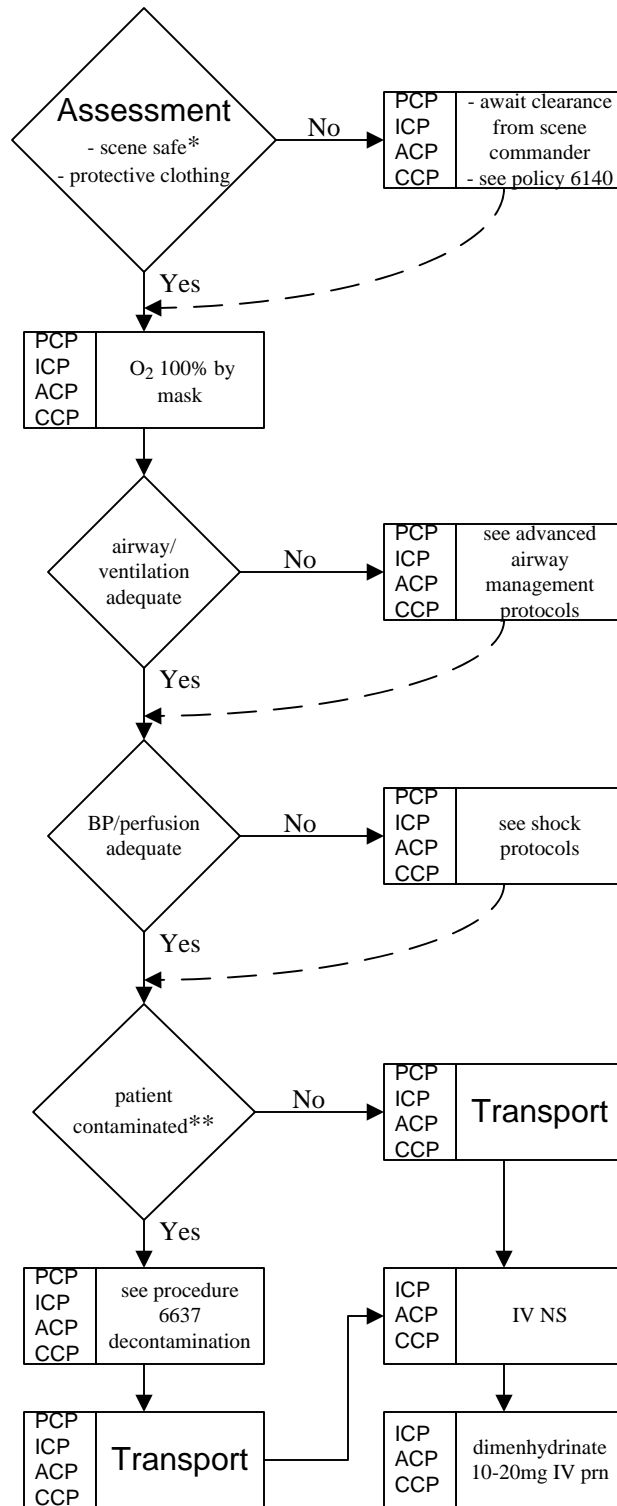


Protocol: Radiation Injury	PDN: 6292.01	Last Updated: April 3, 2003	Subject: Toxicologic Emergency	Page 1
-----------------------------------	---------------------	------------------------------------	---------------------------------------	--------



*see policy 6140 (Hazardous Material Exposure)

**at no time during or after the accident does an exposed patient carry radioactive material or emit radiation. In contrast, contamination accidents involve not only exposure, but the patient has radioactive materials present either externally or internally. As a result, the contaminated patient is continuously exposed to radiation from the contaminated material until it is removed and he/she will give off radiation to responding rescuers